

LEASEHOLD



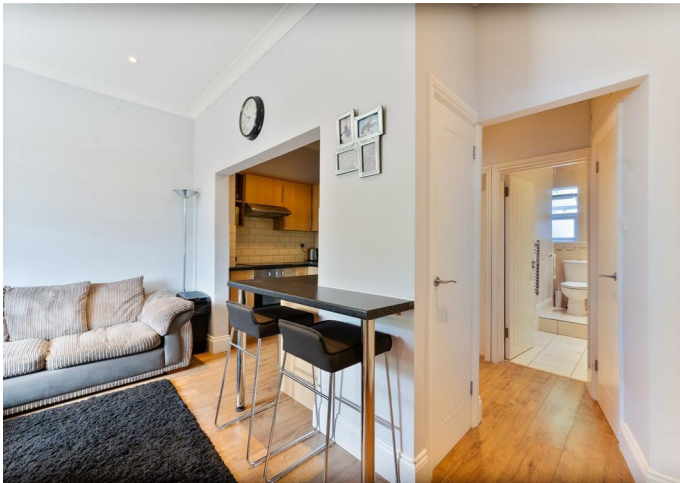
Apartment

45 MID STREET, SOUTH NUTFIELD, REDHILL, SURREY, RH1 4JU

Offers In Excess Of

£175,000

FEATURES




CC GRAY ESTATES
— MAKE YOUR MOVE SIMPLE

1 Bedroom Apartment located in Redhill

Nestled in the charming area of South Nutfield, Redhill, this delightful one-bedroom ground floor flat on Mid Street offers a perfect blend of comfort and convenience. The property is presented in good condition, making it an ideal choice for first-time buyers or those seeking a low-maintenance living space.

Upon entering, you will find a welcoming reception room that provides a cosy atmosphere, perfect for relaxation or entertaining guests. The well-appointed bedroom offers a peaceful retreat, while the bathroom is designed for both functionality and comfort.

One of the standout features of this apartment is the access to a communal garden, providing a lovely outdoor space to enjoy the fresh air and greenery. Additionally, the property benefits from off-street parking for one vehicle, ensuring that parking is never a concern.

With no onward chain, this flat is ready for you to move in without delay. Its prime location in South Nutfield means you are well-connected to local amenities, transport links, and the picturesque surroundings of the area. This property presents a wonderful opportunity for those looking to embrace a relaxed lifestyle in a friendly community. Don't miss your chance to make this charming flat your new home.


Call us on

0203 648 6357

info@ccgrayestates.com

<https://ccgrayestates.com/>

Council Tax Band

Energy Efficiency Rating		
	Current	Potential
<i>Very energy efficient - lower running costs</i>		
(92 plus) A		
(81-91) B		
(69-80) C		
(55-68) D		
(39-54) E		
(21-38) F		
(1-20) G		
<i>Not energy efficient - higher running costs</i>		
England & Wales		EU Directive 2002/91/EC 

Agents Note: Whilst every care has been taken to prepare these particulars, they are for guidance purposes only. All measurements are approximate and are for general guidance purposes only and whilst every care has been taken to ensure their accuracy, they should not be relied upon and potential buyers are advised to recheck the measurements.

