

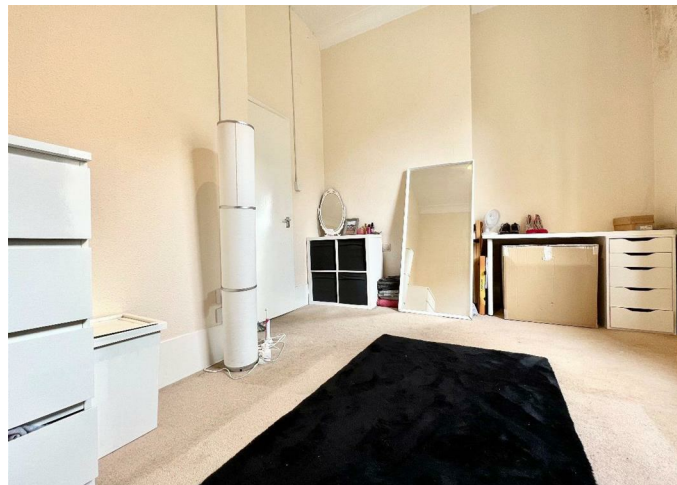
Flat

# F6 13 ANERLEY PARK, ANERLEY, SE20 8NF

Per Month

## £1,400

FEATURES



**CC GRAY ESTATES**  
— MAKE YOUR MOVE SIMPLE

# 1 Bedroom Flat located in Anerley

Welcome to this charming property located in the sought-after area of Anerley Park, SE20. This delightful flat boasts a generously sized reception room, perfect for entertaining guests or simply relaxing after a long day. With one spacious bedroom, this property offers ample space for comfortable living.


Situated on the first floor, this bright and airy flat is sure to capture your heart with its abundance of natural light flooding through the windows. The large double bedroom provides a peaceful retreat, ideal for a good night's sleep.

This property comes unfurnished, allowing you the freedom to decorate and style the space to your taste and preferences. Additionally, the communal garden offers a tranquil outdoor space where you can unwind and enjoy the fresh air.

Don't miss out on the opportunity to make this lovely flat your new home. Contact us today to arrange a viewing and experience the charm of Anerley Park living for yourself.

Call us on  
**0203 648 6357**  
[info@ccgrayestates.com](mailto:info@ccgrayestates.com)  
<https://ccgrayestates.com/>

**Council Tax Band**  
**B**

Energy Efficiency Rating		
	Current	Potential
Very energy efficient - lower running costs		
(92 plus) <b>A</b>		
(81-91) <b>B</b>		
(69-80) <b>C</b>		
(55-68) <b>D</b>		
(39-54) <b>E</b>		
(21-38) <b>F</b>		
(1-20) <b>G</b>		
Not energy efficient - higher running costs		
England & Wales		EU Directive 2002/91/EC 

Agents Note: Whilst every care has been taken to prepare these particulars, they are for guidance purposes only. All measurements are approximate and are for general guidance purposes only and whilst every care has been taken to ensure their accuracy, they should not be relied upon and potential buyers are advised to recheck the measurements.

